



## Food, Energy and Resilience in a COVID Landscape

Charles Telfair Centre – 25 novembre 2020

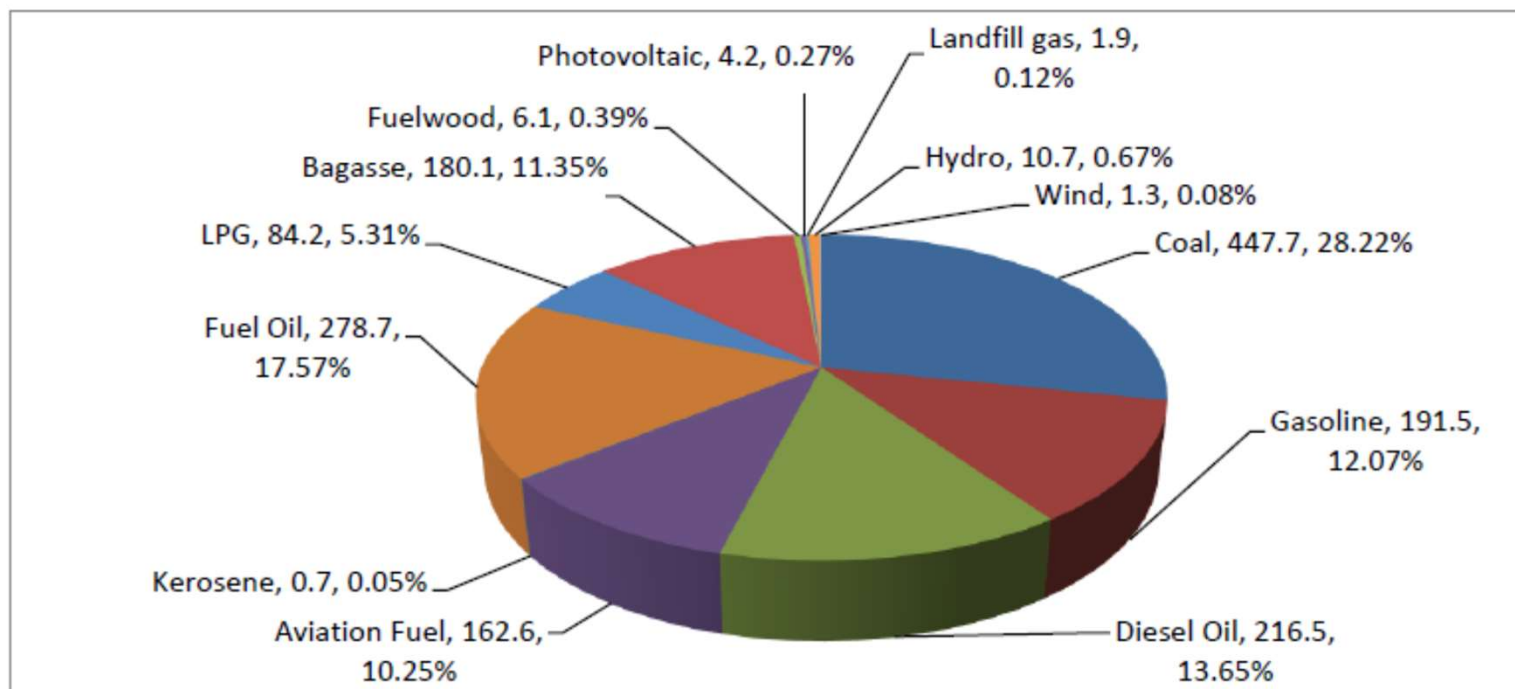
Mickaël Apaya – Head of Sustainability & Inclusive Growth

## WORLD ENERGY OUTLOOK 2020

“The economic downturn has temporarily suppressed emissions, but low economic growth is not a low-emissions strategy – it is a strategy that would only serve to further impoverish the world’s most vulnerable populations”

Dr Fatih Birol, IEA Executive Director – 13 October 2020

## CONTEXTE – ENERGIE PRIMAIRE (IMPORTATION ET LOCALE)



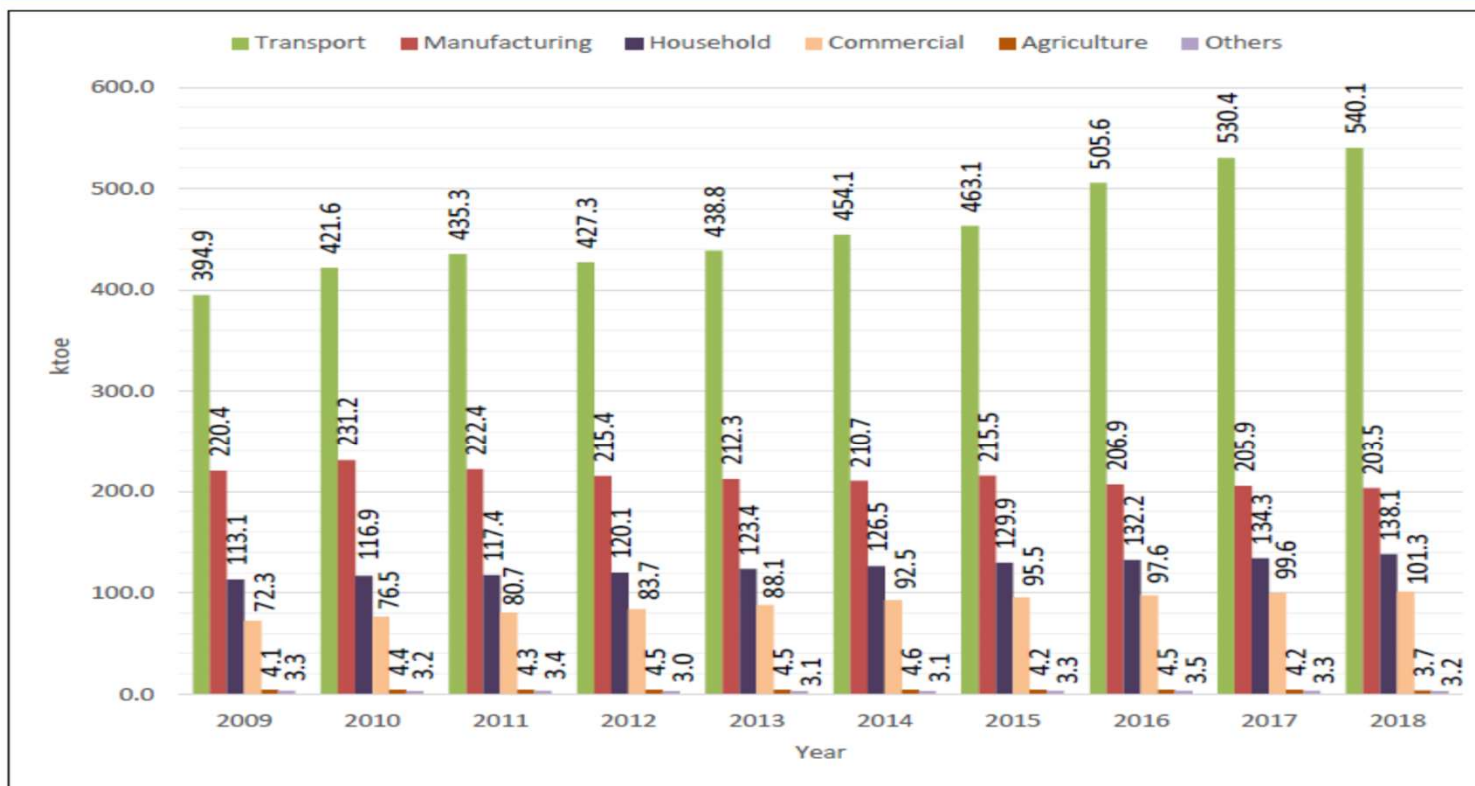
Total = 1586 ktoe  
Import = 87,2%  
Local = 12,8%

The total import bill of energy sources for 2018 amounted to Rs 37,553 M

Data Source: Statistics Mauritius

Figure 1.3 - Primary Energy Requirement (ktoe) 2018

# CONTEXTE – CONSOMMATION ENERGIE FINALE



Data Source: Statistics Mauritius

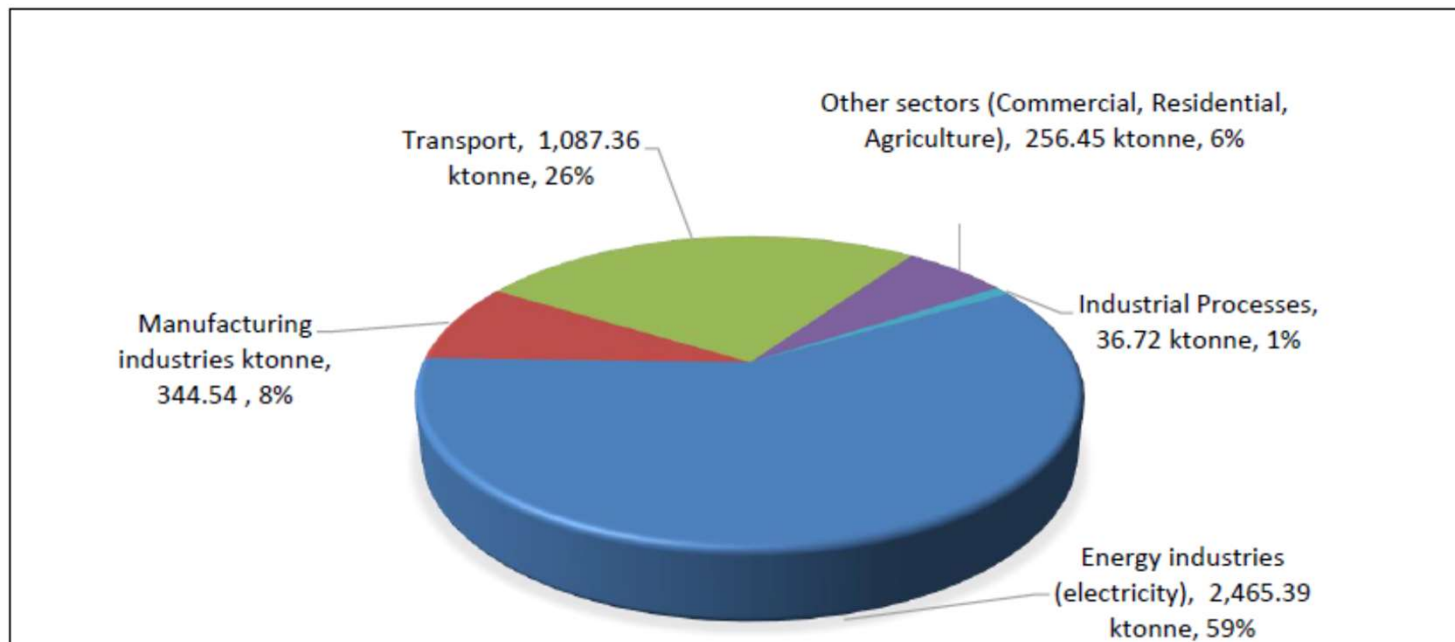
Figure 4.1 - Final energy consumption by sector, 2009 – 2018

Total = 1586 ktoe

Electricity sector =  
300 ktoe (20%)

Transport sector =  
540 ktoe (35%)

## CONTEXTE – EMISSION CO2



In 2018, total CO2 emissions from fuel combustion activities amounted to **4,190.46 ktonnes**

300 gCO2 for 1 USD of GDP

Data Source: Statistics Mauritius (Provisional data)

Figure 5.1 - Sectoral carbon dioxide emissions from fossil fuel combustion, 2018

## ENJEUX DE LA TRANSITION ENERGÉTIQUE/CLIMATIQUE

$$CO_2 = \frac{CO_2}{NRJ} \times \frac{NRJ}{GDP} \times \frac{GDP}{POP} \times POP$$

# ENJEUX DE LA TRANSITION ÉNERGÉTIQUE/CLIMATIQUE

$$CO_2 = \frac{CO_2}{NRJ} \times \frac{NRJ}{GDP} \times \frac{GDP}{POP} \times POP$$

- Importance des ENR
- Roadmap 40% en 2030
- Cadre Régulateur (URA)
- Smart Micro-Grid
- Stratégie Bioélectricité

- Sobriété énergétique
- Maîtrise de la demande
- Manager l'entreprise
- Economie Circulaire
- Low-tech

# ENJEUX DE LA TRANSITION ÉNERGÉTIQUE/CLIMATIQUE

$$CO_2 = \frac{CO_2}{NRJ} \times \frac{NRJ}{GDP} \times \frac{GDP}{POP} \times POP$$

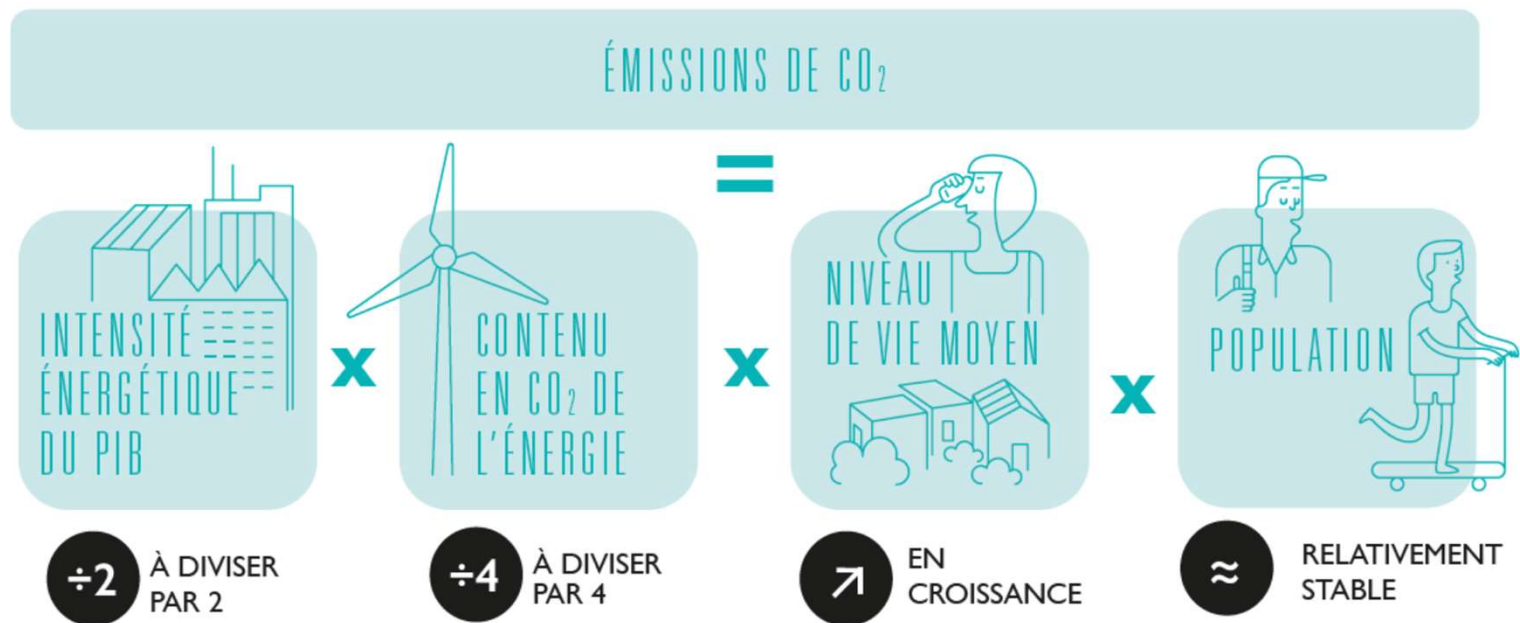
- Importance des ENR
- Roadmap 40% en 2030
- Cadre Régulateur (URA)
- Smart Micro-Grid
- Stratégie Bioélectricité

- Sobriété énergétique
- Maîtrise de la demande
- Manager l'entreprise
- Economie Circulaire
- Low-tech

**Trajectoire de neutralité carbone à long terme**  
**Planification économique**  
**Dialogue multi-partenaires**



# MCB – ETUDE “KLIMA”





**Thank You**